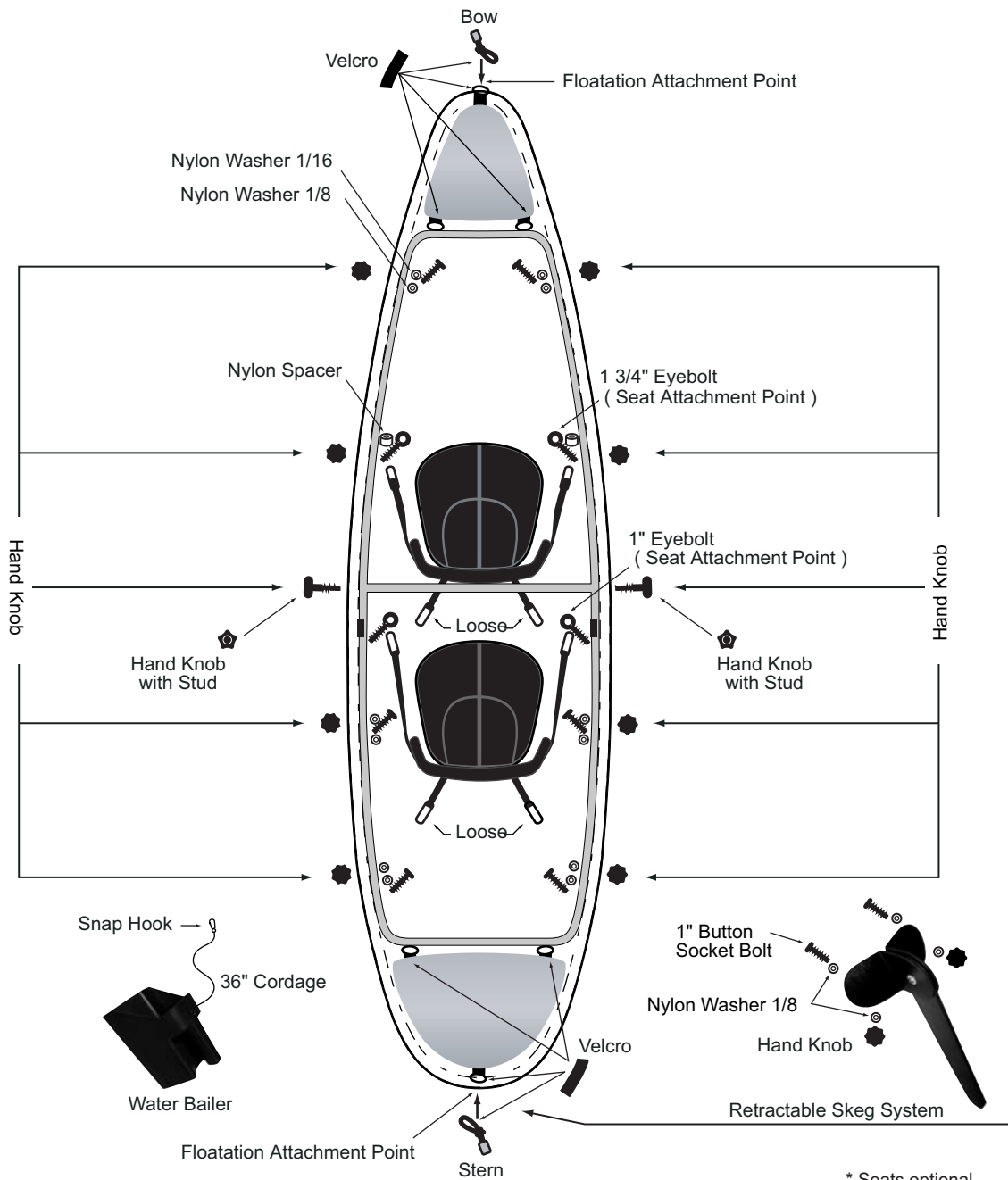


CLEAR BLUE HAWAII

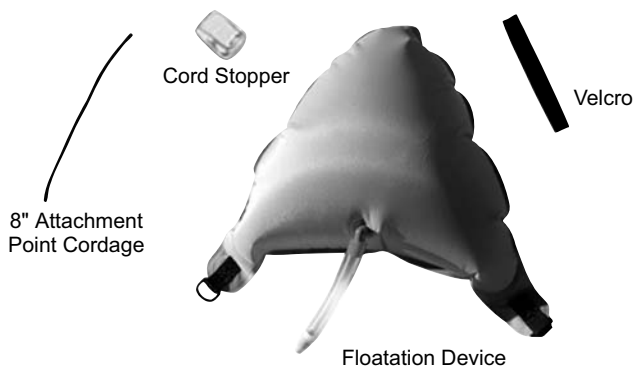
MOLOKINI Instructions

2123 Eluwene St. Honolulu, HI 96819
Toll Free : 1-877-777-6708
International Phone : 1-707-202-8346
Fax : 1-707-317-5367
Email : discover@clearbluehawaii.com
www.clearbluehawaii.com



* Seats optional

FLOATATION DEVICE



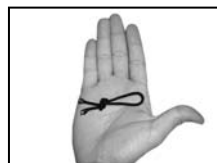
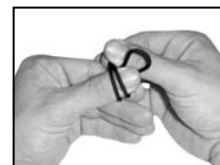
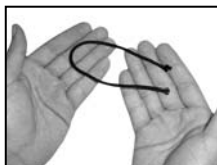
There are two floatation devices the smaller of the two is designed for the bow and the larger for the stern. Velcro is used to attach the floatation devices to the cordage attachment points and to the internal frame system. This is achieved by simply placing the Velcro through the D-rings on the floatation bags and wrapping the Velcro around the frame or cordage attachment point and then back onto it self.

Cordage Attachment Point

Step 1 to 6

The cordage is tied into a knot. The two ends are enclosed with the plastic cord stopper. Allow the plastic cord stopper to snap shut.

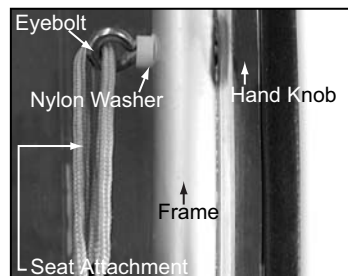
The cordage is designed to act as an attachment point for both the bow & stern floatation. Insert at both the bow & stern outboard to inboard.



EYEBOLTS

The eyebolts are designed as an attachment point for both the forward and aft seat. Place the 1 3/4" eyebolt through the frame accompanied by the nylon spacer and secure with the rubberized hand knob. The 1" eyebolt does not require a spacer and goes into the threaded insert aft of the mid ship bar.

* Ergonomic seats are available as an accessory.



HOW TO CARE FOR YOUR CLEAR BLUE HAWAII BOAT

1. After paddling wash with mild solution of soap or lukewarm water.
2. Using a soft cloth or sponge, gently wash the sheet to loosen dirt and grime and rinse well with water.
3. To prevent water spotting, thoroughly dry with chamois or cellulose sponge.
4. Avoid the use of abrasive cleaners, squeegees and/or other cleaning implements that may mar the coating.
5. When entering, loading or unloading your boat place it parallel to then shore in water deep enough so you don't scuff the bottom of the hull. Don't drag your boat over sandbars and riffles; lifting over obstacles prevents abrasion and scratching.
6. To prevent UV damage store indoors. If you keep your boat outdoors turn it upside down. The bottom has an additional coating of UV that will help deter damage caused by the sun.
7. If you apply sunscreen do it before entering the boat. Petroleum products will attack the integrity of the clear polycarbonate material. If contact with a petroleum based product is made follow the steps in section 1 above.

WARNING

For use in calm water this is not a white water or surf kayak. This kayak should be used by someone who is familiar with Kayaking and water conditions. Always check the condition of your kayak and gear before entering the water. Wear a coast guard approved personal floatation device. Understand your limitations. Be aware of your environment, the weather, and boat traffic. Do not use under the influence of drugs or alcohol.